



Hardware Accelerated Computing M-Series Overview



M-501 FPGA Module

- Xilinx Virtex-6 LX240T FPGA
- Available with:
LX365T/SX315T
- 512MB DDR3
 - 32-bit @ 533MHz
- x8 Gen2 PCIe
- Up to 6 M-501 Modules per EX-500 Back Plane
- Dimensions (H x W):
 - 3.880 x 1.752 (Inches)
 - 98.565 x 44.492 (mm)
- Operating Temp: 0 C to +85C

VIRTEX

PCI EXPRESS



Top View



Bottom View

M-503 FPGA Module

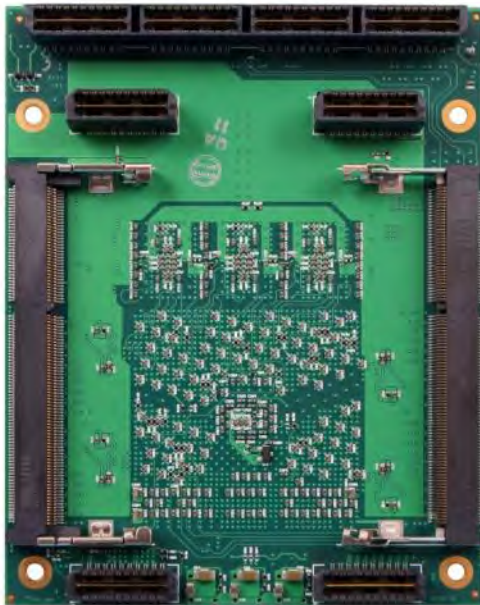
- Xilinx Virtex-6 LX240T FPGA
- Available with:
LX365T/LX550T/SX315T/SX475T
- 2 x DDR3 SODIMM
 - 4GB SODIMM @ 400MHz, 64-bit
12.8 GB/s
 - 2GB SODIMM @ 533MHz, 64-bit
17 GB/s
- 3 x 9MB QDRII SRAM
 - 18-bit bi-directional
10.8 GB/s
- 5 Memory Controllers with multiport capability
- 80 LVDS and 8 GTS Transceivers
- Up to 3 M-503 Modules per EX-500 Back Plane
- Dimensions (H x W):
 - 4.843 x 3.523 (Inches)
 - 123 x 89.492 (mm)
- Operating Temp: 0 C to +85C

VIRTEX

PCI EXPRESS



Top View



Bottom View

M-504 FPGA Module

- Xilinx Virtex-6 LX240T FPGA
- Available with:
LX365T/LX550T/SX315T/SX475T
- 2 x DDR3 SODIMM
 - 4GB SODIMM @ 400MHz, 64-bit
12.8 GB/s
 - 2GB SODIMM @ 533MHz, 64-bit
17 GB/s
- 3 x 9MB QDRII SRAM
 - 18-bit bi-directional
10.8 GB/s
- 5 Memory Controllers with multiport capability
- 63 LVDS and 8 GTX Transceivers
- Up to 3 M-504 Modules per EX-500 Back Plane
- Dimensions (H x W):
 - 4.486 x 3.523 (Inches)
 - 114 x 89.492 (mm)
- Operating Temp: 0 C to +85C

VIRTEX

PCI EXPRESS



M-505 FPGA Module



Top View



Bottom View

- Xilinx Kintex-7 K325T FPGA
- Available with: K410T
- DDR3 SODIMM
 - 4GB SODIMM @ 400MHz, 64-bit
6.4 GB/s
 - 2GB SODIMM @ 800MHz, 64-bit
12.8 GB/s
- 34 LVDS and 8 GTX Transceivers
- Up to 6 M-505 Modules per EX-500 Back Plane
- Dimensions (H x W):
 - 3.880 x 1.752 (Inches)
 - 98.565 x 44.492 (mm)
- Operating Temp: 0 C to +85C

KINTEX⁷

PCI EXPRESS

